

August 2025

G CLEF ACOUSTIC LTD.

WELLFLOAT®

WELLFLOAT Delta Extreme II

Introducing the new Delta Extreme II insulator, which boasts our unique two-stage pendulum structure, to the WELLFLOAT Delta series, specifically crafted to eliminate unnecessary vibration.

Released in Sep. 2025



A two-stage pendulum structure insulator that fully leverages the technology of WELLFLOAT Double 4548, which has captivated numerous audio enthusiasts since its inception.

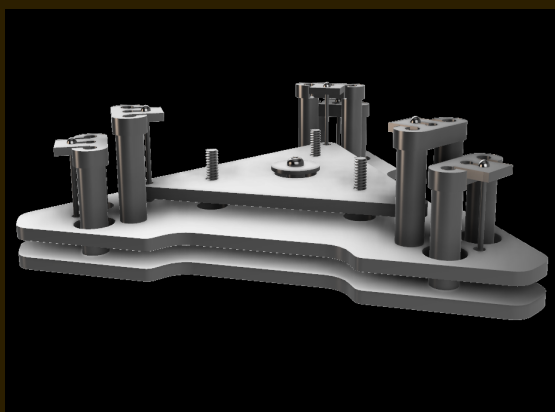
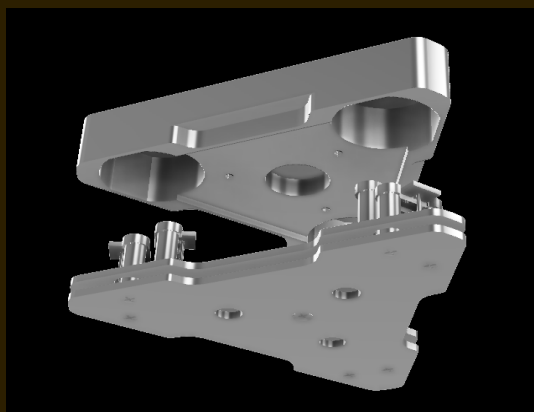
Recommended usage:

- Speaker systems (3-4 units per channel)
- Large amplifiers and analog players (3-4 units)
- Small network devices and external clocks (1 unit)
- Desktop speakers (1 unit)

Load capacity: 200 kg per piece (static load). When using four pieces, it can accommodate equipment weighing up to 800 kg.

Product Features

- The latest in the WELLFLOAT series, which suppresses sound distortion with a "suspended structure" that is well-known among audiophiles.
- High-dimensional vibration control with a "multi-stage pendulum (two layers)" that is also used to detect gravitational waves.
- A "multi-stage pendulum" with a resonant frequency f_0 has a damping characteristic of $H(f) \sim (f_0/f)^{2 \times n}$ for n stages if the quality factor (Q) is high enough, but the WELLFLOAT Delta Extreme II has a vibration isolation ratio of 10 to the power of 8 at $f_0 = 3\text{Hz}$, and at $f = 300\text{Hz}$, theoretically, with two stages.



- Machined aluminum housing and stainless steel base eliminates unnecessary resonance and delivers pure sound quality.
- A newly developed WELLFLOAT mechanism consisting of a 3-unit by 2-layer configuration has been installed internally.
- Super anodized aluminum case.
- Fitted with holes for direct support of audio equipment with spikes legs.
- The intricate design by Shiro Nakamura, a renowned figure in the automotive design industry, harmoniously integrates with the aesthetic of high-end audio equipment.

Specification

Design: 6 small WELLFLOAT mechanisms (3 x 2 layers) Built-in

Materials: Stainless steel, aluminum

Load capacity: 200kg per unit (static load)

Dimensions: Width 155mm, height 40mm, weight: 1.2kg



Product name	Model name	specification	release date
Insulator	Delta Extreme II	2-layer multi-stage pendulum structure	Sep.2025

G CLEF ACOUSTIC LTD.

<https://wellfloat-global.com/>

The contents posted here are current as of the date of announcement. The contents and specifications may be changed without notice for improvement purposes.

